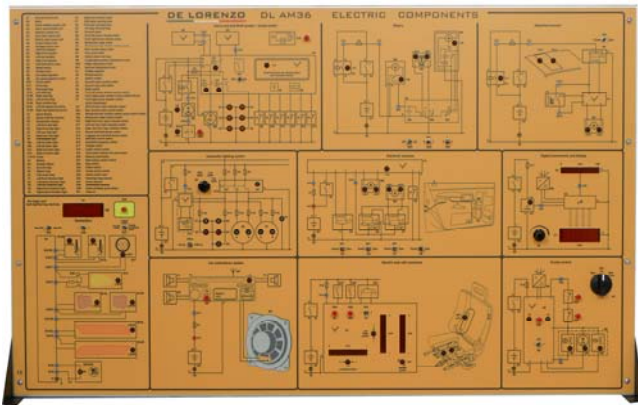




ELECTRIC COMPONENTS



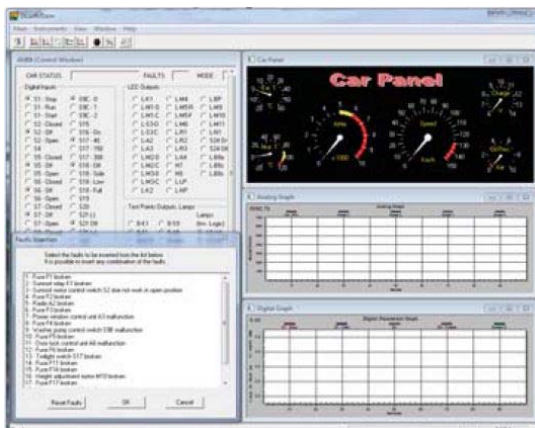
DL AM36

The simulator covers the following topics:

- Digital instruments and display,
- Electrical sunroof,
- Cruise control,
- Safety belts tension relay,
- Radio/stereo system,
- Automatic lighting system,
- Electric seats regulation,
- Fuel shut-off inertial switch,
- Electric (power) windows,
- Alarm system,
- Multi-function valve in the fuel tank,
- Air-bag (driver-bag, passenger-bag, side-bag, window-bag),
- Wipers.

The panel is complete with CAI software

CAI SOFTWARE



DL NAV

Each software, installed on a PC, in addition to keeping under control the simulation progress, provides a set of lessons consisting of a theoretical description of the relevant subject and of a guide to the performance of the simulation.

Each software is subdivided in lessons.

Therefore, it is easy for the teacher to plan the whole training course as well as to repeat one particular lesson or only part of it (theory, experiments, fault finding).

The hypertexts help in analyzing the proposed subjects in a personal way as a function of the knowledge of each student.

Through a set of questions with multiple choice answer it is possible to verify the learning progress of the student.

A panel supervision software facility, where in real time all the system variables are displayed, makes easier the control of the operation of the simulator and the prompt understanding of the current state of the simulation.